

EAST+ COWPER

UNITS:
105 + 205 + 305 + 405

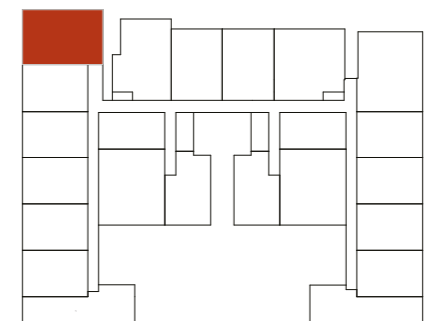
2 BED + 2 BATH + STUDY



APARTMENT AREA

INTERNAL
77m²
+
EXTERNAL
9m²

TOTAL 86m²



Disclaimer: This layout plan was produced prior to construction and has been prepared for a general outline for the guidance of intending purchasers and do not constitute an offer or contract. All descriptions, dimensions, references to conditions and necessary permutations for use and other details are believed to be correct, but any intending purchasers should not rely on them as statements or representations of fact, but must satisfy themselves by inspection or otherwise to the correctness of each item, and where necessary seek independent advice. Changes may be made during construction and elements such as areas, fittings, fixtures etc may change without notice. The position of furniture and furnishings is for illustration only and should not be taken to be indicative of final positions of power points, tv connections points and the like prospective purchaser must rely on their contract for sale for the list of inclusions. Bulkheads for services are not depicted. No third-party supplier or their agents has any authority to make or give any representations or warranty in relation to this property. Areas are subject to final survey. Completed apartments may vary from the plans shown.

